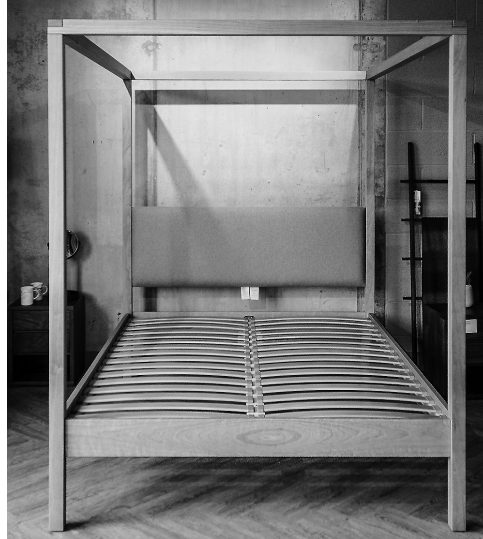




NATURAL BED  
COMPANY

## HIGHLAND Assembly Instructions



### Items included in bed flat pack are:

- |   |  |
|---|--|
| 1 x Upholstered headboard panel   | 1 x headboard rail                       |
| 1 x footboard rail  | 2 x side rails                           |
| 4 x tall posts  | 4 x canopy cross beams                   |
| 1 x centre rail (not included if you have ordered a single bed)   |  |
| 1 x set of sprung beech slats   | 1 x set of plastic end caps (2 per slat) |
| (N.B. If you have ordered a 90cm or 180cm wide bed – you will receive a double slat system including sliders) |  |

- |                 |                        |                                  |
|-----------------|------------------------|----------------------------------|
| <u>Fixings:</u> | 8 x threaded bolts     | 8 x half-moon washers            |
|                 | 8 x nuts               | 1 x spanner                      |
|                 | 16 x wooden dowels     | 4 x small silver bolts           |
|                 | 4 x large silver bolts | 1 x hexagon key for silver bolts |

1. Place the wooden dowels in the outer holes at the ends of the side rails, headboard and footboard rails. Tap these in securely. Screw the 8 threaded bolts into the metal insert nuts located on the four posts

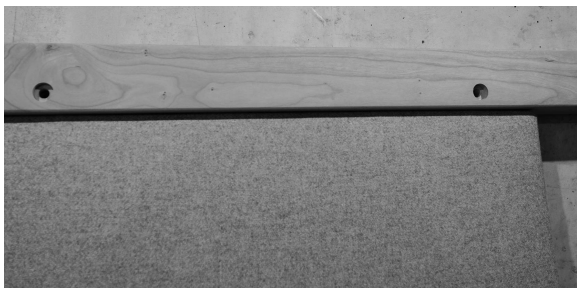




NATURAL BED  
COMPANY



2. Next build the headboard: take one of the two posts that have the large mortise slots in them (see the first image above) and insert the timber edge of the upholstered panel within the slot. Attach the lower headboard rail to the post using the half-moon washer supplied. Do the same to the other side using the remaining post with the mortise slot. N.B pay attention to the numbers and ensure they correspond.



3. The upholstered headboard panel will need securing through the back of the headboard legs using the small silver bolts.



4. Take the remaining two posts and foot rail and follow the numbers to build the footboard in the same way, using the nuts and half-moon washers.

5. Attach the side rails to the headboard and footboard posts and loosely secure using the half-moon washer and the nut with the spanner provided (see image below). Ensure the frame is square then fully tighten all of the nuts using the spanner.

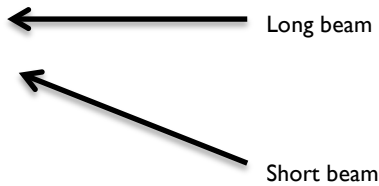




NATURAL BED  
COMPANY

6. Lower the centre rail onto the brackets and push down firmly into position –see the previous images (N.B. single beds do not come with a centre rail).

7. Matching the numbers, place the shorter top cross beams onto the top of the posts across the bed's width (you may need a second person to hold these in place). Place on top of the L-shape cut-out section, at a right angle, the long posts (see image below). These run along the length of the bed i.e. from head to foot. Connect the beams to the posts using the long silver bolts, and tighten using the hexagon key.



8. Attach the end caps to the sprung slats (see image to follow): an end-cap slots on to each end of the slat (ensure the slat curves up in the middle and the 'peg' on the end cap points downwards.)

9. Attach the slats to the bed frame by slotting the pegs of the end caps into the predrilled holes, which run along the upper side of the inner side rails/centre rail.



**NB:** If you have ordered a 90cm or 180cm wide bed you will receive a double slat system.

Counting from the headboard end – the fourth slat will be a double slat (made up of an upper standard slat to which is attached a lower second slat via a plastic slider). Slats 4-9 will be double slats, the others are standard single slats (see image below).



If you have any queries about the assembly procedure – please call our sales team on 0114 272 1984, Monday-Saturday 10am - 5.30pm

**We hope you enjoy your Natural Bed Company Bed!**

DEVONSHIRE POINT, 123-125 FITZWILLIAM STREET, SHEFFIELD, S1 4JP  
T: 0114 272 1984 E: [counter@naturalbedcompany.co.uk](mailto:counter@naturalbedcompany.co.uk) [www.naturalbedcompany.co.uk](http://www.naturalbedcompany.co.uk)